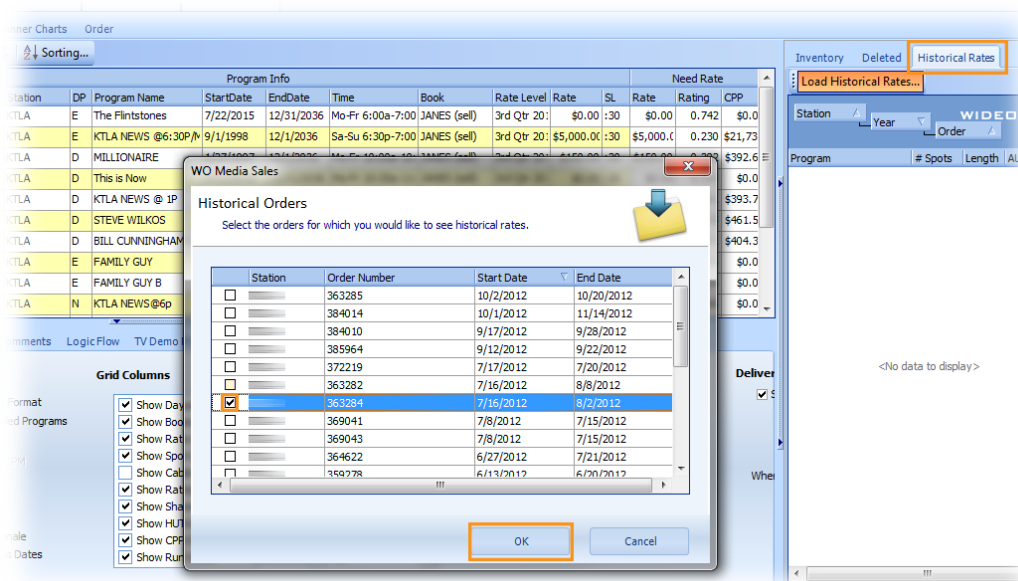


## See Historic Rates for previous orders from WO Traffic

WO Media Sales has a new feature and AEs are going to love it! As part of the inventory preview, users can now view historical rates. It's like a mini-posting system which loads all the previous orders for the advertiser/agency in the header of the campaign. This helpful negotiating tool can confirm or refute claims of lower rates in previous purchases.

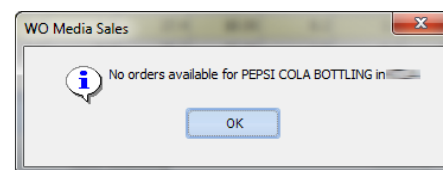
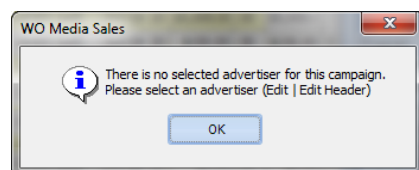
To see it at work, build or open a campaign. From **Avail** or **Planner**, with the **Historical Rates** tab selected in the right pane, click **Load Historical Rates**.

In the resulting **Historical Orders** dialog, tag the stations from which rates are to be pulled. Click **OK**.



If no **Advertiser** is selected when **Load Historical Rates** is applied, users will receive a warning message with instructions to click **Edit Header** from the **Edit** tab and add the **Advertiser**.

When attempting to load historical rates from an account the user does not have rights to see, a warning message is displayed informing them that no orders are available.



If the user has rights to the account, the **Historical Rates** grid is populated.

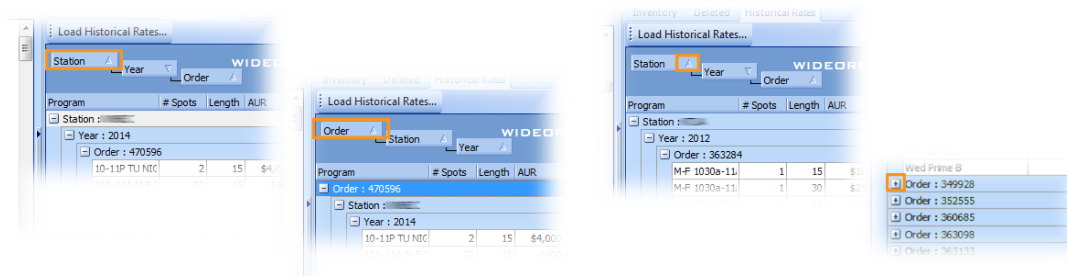
Program	# Spots	AUR
Year : 2012		
Order : 320470		
M-F 730p-8p	1	\$37.50
M-F 7p-730p	3	\$37.50
M-F 8a-9a	3	\$50.00
Thur Prime A	1	\$283.33
Order : 321167		
Fri Prime A	1	\$130.00
M-F 6a-7a	5	\$33.33
M-F 8a-9a	2	\$50.00
M-F 9a-10a	5	\$20.00
Wed Prime B	1	\$0.00
Order : 349928		
Order : 352555		
Order : 360685		
Order : 363098		
Order : 363133		
Order : 405969		
M-F 1130p-12a	1	\$39.00
M-F 11p-1130p	1	\$39.00
M-F 8a-9a	1	\$71.00
Thur Prime A	1	\$250.00
Year : 2011		
Year : 2010		

## Sorting options

The default loading order is by **Year** then **Order** number. This order can be modified and may include **Station** if multiple stations were tagged. Click and drag the **Order** label to the first position, and *WO Media Sales* resorts the results.

Click the small arrow to the right of each label to toggle back and forth between ascending or descending order.

Click the + or - sign to the left of each category to expand or collapse the data.



If you have any questions or concerns, please call or email support.

**WO Media Sales Support:**  
 415.675.6775 Option 2, 1  
[sales-support@wideorbit.com](mailto:sales-support@wideorbit.com)